



Highcliffe School Student Bulletin

Monday 9th – Friday 13th January 2017: Week A

General Notices

Highcliffe & Ballard Lecture Series (VDN)

This month sees the start of the new lecture series. These talks are free to everyone and take place at Ballard School in the Performing Arts Centre at 7pm on specific dates. Each tutor group has been given a leaflet to advertise these talks, which cover a wide range of topics. I would strongly encourage students, staff and friends to attend as they open our eyes to opportunities which we may not have considered before. We start with a talk from a globetrotting doctor on **Thursday 19th January 2017** who has spent his career working in East Africa, Australia, Hong Kong and Saudi Arabia. Come and listen to his stories about what he has encountered in A & E departments. The lecture series have always proved popular and very well supported by Highcliffe families. See you there!

Lost Property (KTN)

Please come and claim as soon as possible -

Blue Nike Size 6 trainers – unnamed.

Dark blue Nike size 8 trainers – unnamed.

In addition, numerous coats left from before Christmas – due to lack of storage space, these will be sent to the British Heart Foundation charity shop at the end of the week.

Eating in the corridor (KTN)

Food is **NOT** to be eaten in the school corridors. Spilt food can cause accidents. Please eat outside or in the dining hall. Thank you. Mrs Thompson

A friend for the future ... (DBN)

Would you like to host a Japanese student? In March 2017, we will be offering an exciting opportunity to learn about another culture and develop a friendship with someone from another country. Fourteen boys from our partner school in Hiroshima will be visiting Highcliffe School. We are looking for families to look after the students. They will be here from Thursday 16th March to Sunday 26th March (departing 10am). If interested, please let Mr Bryden know by the school office or download the letter from the school website and send in the form. (The letter is also attached to the bulletin notice).

Here is what Jack Ogden, who hosted last year, had to say:

"I would recommend hosting a Japanese student if you get the opportunity. My family and I agree that this is the best thing we have collectively done. The students are polite, respectful and come with the intention of enjoying themselves. They slot easily into your weekly routine and are enthusiastic about family life. They are excited to go on local trains or simply to enjoy fish and chips on the beach."

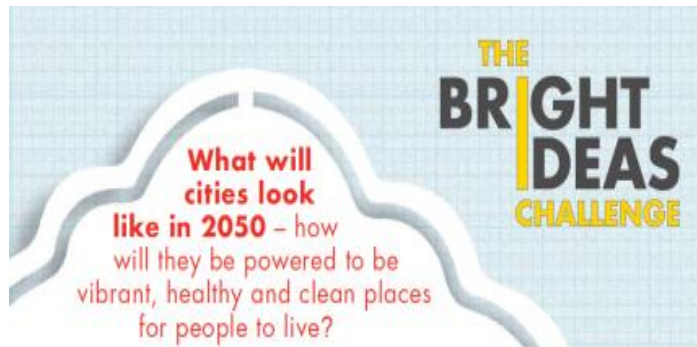
Artisan Theatre School

Just a reminder this will now be running every Friday 4-7pm. Please see attached enrolment form if you would like to join.

Clubs and Revision Sessions

STEM Tech club

Takes place on Wednesdays each week. The club has started well with 6 teams of students signed up to enter the BP Bright Ideas competition to design a solution to power a city on the south coast in 2050. The students were all working hard to start initial ideas for this challenge which we are aiming to complete just after February half term to be in with a chance of a substantial cash prize! James, Beth and Pat

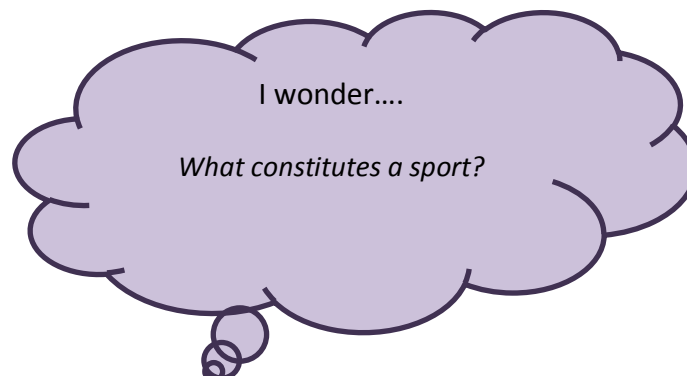


My Help Live

Support and guidance Progression and development Breakthrough and achievement

Extended Learning Time in our Learning Centres

Break and Lunchtime		After School	
Monday-Friday		Monday-Thursday	
LS1	11.00-11.20am	Library	3.05-4.00pm
LS1	13.30-13.55pm	IT2	3.05-4.00pm
IT2	13.30-13.55pm		



PE Notices

FIXTURES/PRACTICES 9 th -13 th January		
	LUNCHTIME (1.25-1.55pm)	AFTER SCHOOL (3.05-4.10pm)
Monday	Year 9 Basketball Club (SHM)	6 th Form Rugby Academy (JDN)
Tuesday	Years 10 & 11 Basketball Club (NJS)	
Wednesday		Year 12/13 Football v Arnewood (A) (SHM) KO 2.15pm Year 7 Girls Football v Puddletown Middle School (A) (CFM) KO 1.30pm Year 7-10 Netball Club (MWR & HWH)
Thursday	Year 7 Basketball Club (NJS)	Year 7 & 8 Girls Basketball Club (LSN) Year 7-10 Girls Football Club (CFM & HWH)
Friday	Year 8 Basketball Club (SHM)	Year 11 Volleyball Club (NJS)

Literacy

Spelling Focus

Closing the Gap

Here are two simple strategies to tackle those spellings that you find tricky and to “Close the Gap”:

Find the “root word”.

Where is the “Danger Zone” for “temperature”?

The Danger Zone for this word is in the middle. We often miss out the “e” or reverse the “e” and “r”.

Use the “root word” strategy. The root word is the main word on which the new word is based. The “root word” for “temperature” is “temper”. This does not change. Therefore, this helps us remember the spelling for “temperature”:

temperature

What is the root word for the following word?

Government.

The Danger Zone for this word is the “n”. Students often miss it out. The root word is “govern”. This word is still in **government**.



'We value the power of education to change lives.'

A fantastic opportunity: A chance to host a Japanese student

"It's one of the best things I've ever done!" – A Highcliffe parent who hosted

Dear Parent,

Next term, Highcliffe School will once again be welcoming a delegation of students from our partner school in Hiroshima, Japan, and we are looking for families to host them and for students to act as 'buddies' within school.

As many of you may well be aware, we welcomed 15 students from Johoku High School to our school and community in March 2016. As always, they made a huge impact, impressing everyone with their good humour, good manners and general "have-a-go" approach to everything.

Every year, both students and the host families have found it a very enjoyable experience and, within a short space of time, have always forged good friendships. Obviously, the Japanese students get a lot out of the experience, but so too do the host families. One host family once commented that looking after a Japanese student was a great experience because they found themselves doing more things together as a family! Many families have remained in contact with their "buddy" from previous exchanges. Moreover, families and students are often keen to host again.

The students will be here from Thursday 16th March 2017 to Sunday 26th March 2017, departing at 10am.

The exchange is **open to students at Highcliffe School from years 7 to 13**. It goes without saying, of course, that families will need to be able to provide a secure, safe and supportive environment for their guest.

Following the government's statutory guidance, we are required to carry out DBS checks on all members in a host family over the age of 18. DBS checks are carried out online and you will receive an email from them inviting you to complete the process. (Please check your junk mail too for the email).

We will require you to bring to school **three** forms of identification, one of which must contain your full address and, if applicable, proof of name change. These must be the following:

- Current driving licence
- Passport including photograph
- Birth Certificate
- Utility bill or financial statement, dated within the last 3 months
- Change of name documentation, i.e. deed poll or marriage certificate
-

There will be a meeting about the programme on **Monday 9th January** from 6.00 to 7.00 pm in En1.

It's worth reminding ourselves that this is a tremendous opportunity. Highcliffe is one of the few state schools in Britain to host such a programme. In this era of globalisation, we need to be able to forge relationships with people from different cultures than ours. Programmes like these help our young people develop such qualities.

Furthermore, looking after someone from a different culture and sharing one's own life and culture with them is not only enriching, but very rewarding emotionally.

If you are at all interested in hosting a Japanese student and your son/daughter has shown an interest in learning about different cultures, please fill in the attached form and give it to Mr Bryden by **Friday 6th January 2017** OR send a brief email to office@highcliffeschool.com with contact details.

If you have any questions at all about hosting, please do not hesitate to contact me.
Yours faithfully,



Mr D Bryden
Japanese Exchange Organiser

Some questions you may have:

Q: No one in my family speaks Japanese, so how good is their English?

A: Please do not be put off by the language barrier. The Japanese students' English will be of a reasonable standard. Experience, both here and in Japan, has shown that limited Japanese or English is not an obstacle to the students and host families being able to establish a good relationship and make friends.

Q: The Japanese students are all boys. Can my daughter host one, too?

A: Yes, no problem! In recent years, about half of the hosts have been female students.

Q: What about my son/daughter's school work and extra-curricular activities?

A: Please don't feel you have to drop everything. Visiting students are expected to fit in with normal family life. They will be aware that our students have home-study and other commitments.

Q: My son/ daughter is in Year 7. Is he or she too young?

A: The Japanese boys will be 15 to 16 years old. We have often had Year 7 students hosting, both boys and girls. They did an excellent job and really benefited from the experience.

Q: Can the boys share a room?

A: Yes, that is fine.

JOHOKU TO HIGHCLIFFE FRIENDSHIP EXCHANGE PROGRAMME 2017

Please tick the appropriate answer and hand the form to Mr Bryden.

Yes, we are interested in hosting a Japanese student and are able to attend the meeting on Monday 9th January in Room En1 from 6.00 to 7.00 pm.

Yes, we are interested in hosting a Japanese student, but we are unable to attend the meeting. Please let us know of more details.

Student's name: Tutor group:.....

Parent name: Signature.

Contact:



Submission to Artisan Theatre School Lessons Enrolment Form

Pupils Full Name	
D.O.B/Age	
Please list any performing arts experience your child has already had.	
Please circle the class you would like to enrol your son/daughter for: Triple Threat £9 (Musical Theatre 1hr.30mins class) Act, Dance, Sing! Just Drama £5 (45 min class) Just Dance & Singing £5 (45 min class)	
Name of Parent/Guardian	
Address	
Contact Telephone No.	
Email	



Submission to Artisan Theatre School Lessons Enrolment Form
